

# **The Importance of Addressing Social Determinants of Health**

July 2020



**Stephen Njenga, MPH, MHA, CPHQ, CPPS**  
Director of Performance Measurement Compliance  
Missouri Hospital Association

# Changing Landscape in Health Care



Attribute: © Jorge Royan / <http://www.royan.com.ar> / CC BY-SA 3.0



# Your Zip Code Equals Your Health



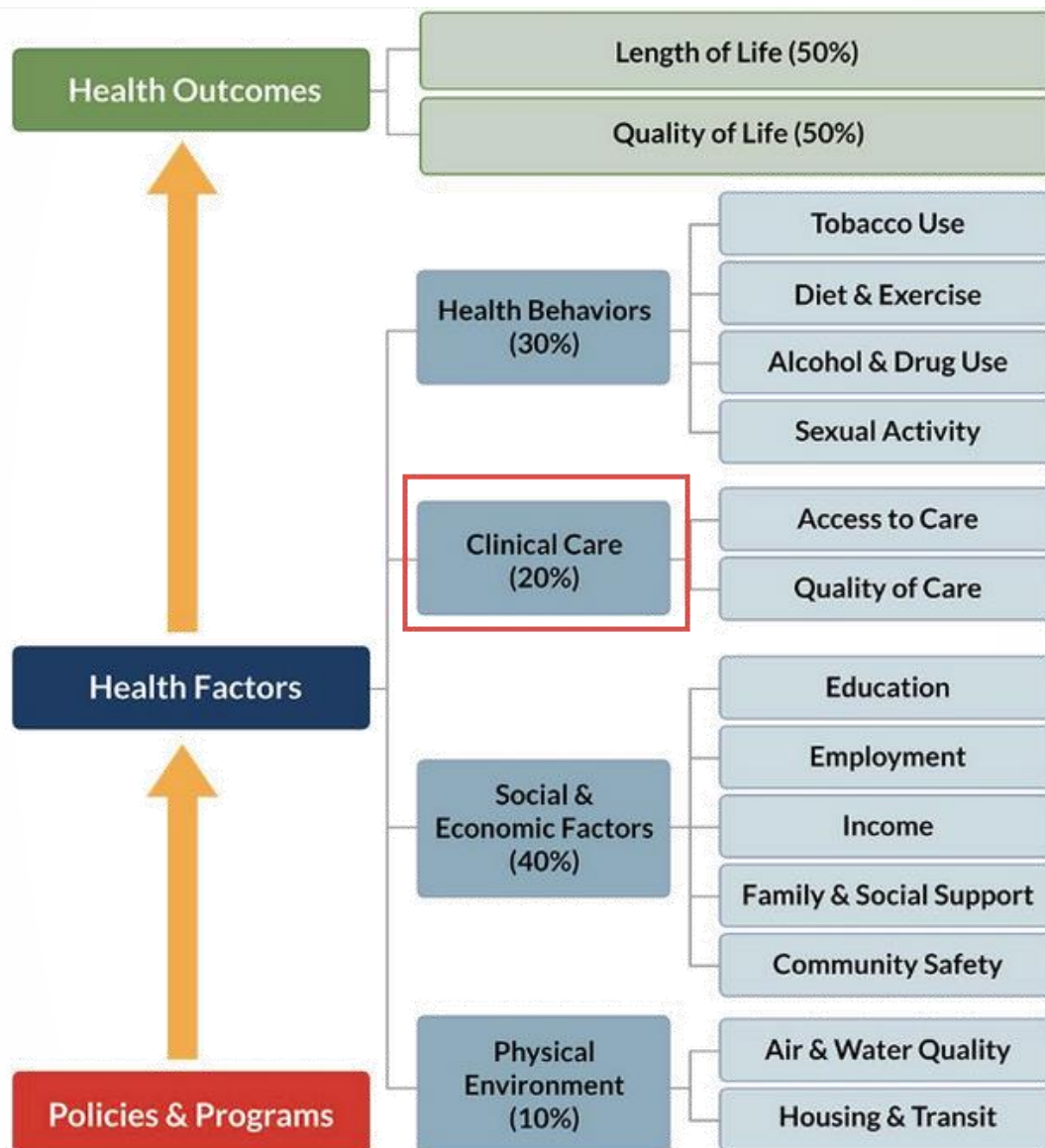
# Define Social Determinants of Health

“According to the Centers for Disease Control and Prevention, conditions in the places where people live, learn, work, and play affect a wide range of health risks and outcomes. These conditions are known as social determinants of health.”

# Social Determinants of Health

SDOH Dimension	Description
<b>Housing Instability</b>	Having difficulty paying rent or affording a place of one's own, living in overcrowded or run-down conditions
<b>Food Insecurity</b>	Not having reliable access to enough affordable, nutritious food
<b>Transportation</b>	Not having affordable and reliable ways to get to medical appointments or purchase healthy food
<b>Education</b>	Not having access to high school classes or other training
<b>Utility Needs</b>	Not being able to regularly pay utility bills
<b>Violence</b>	Being exposed to use of physical force or power that results in, or has a high likelihood of resulting in, injury or death
<b>Family and Social Support</b>	Not having relationships that provide interaction and nurturing
<b>Employment and Income</b>	Not having the ability to get or keep a job

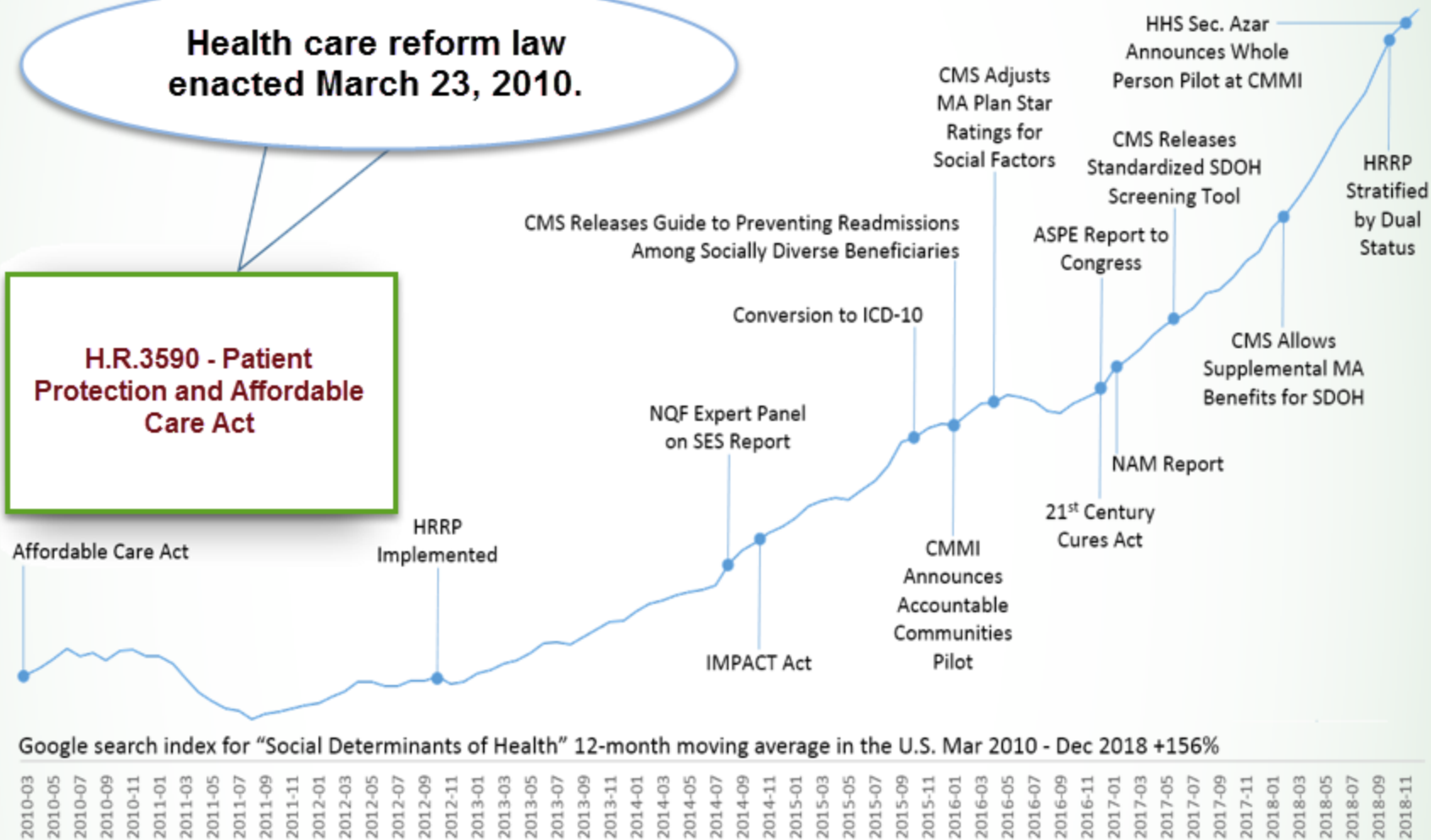
# County Health Rankings Model





**Health care reform law  
enacted March 23, 2010.**

**H.R.3590 - Patient  
Protection and Affordable  
Care Act**





APR 02 | MORE ON BILLING AND COLLECTIONS

## AMA, UnitedHealthcare team up on billing codes that address social determinants of health

The two organizations are working together to standardize how data is collected, processed and integrated regarding SDOH.



Jeff Lagasse, Associate Editor



## Blue Cross Blue Shield Institute Launches Program to Address Social Determinants of Health at The Community Level

by Fred Pennic 03/26/2019 0 Comments

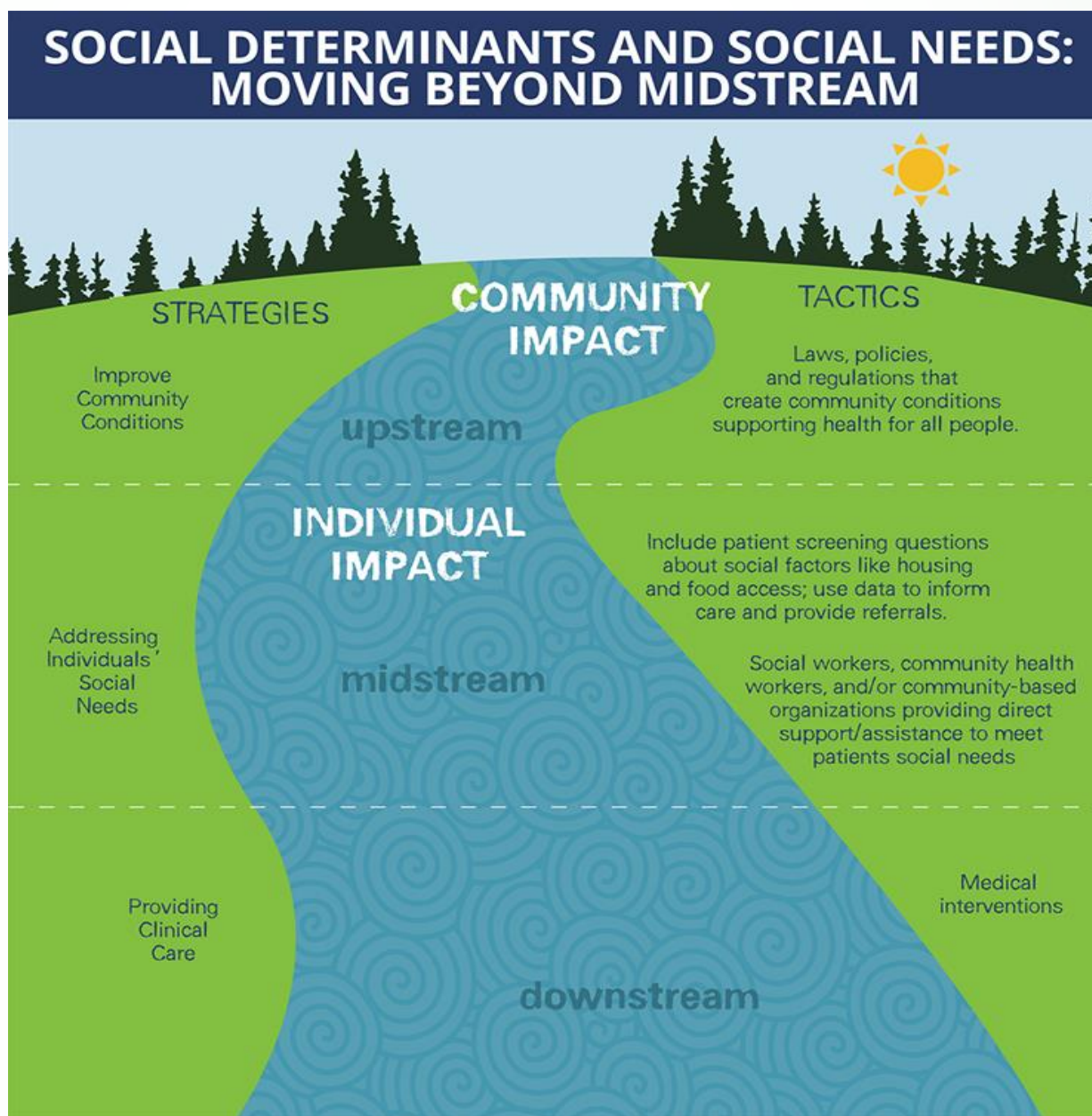


individual

Blue Cross Blue Shield Institute is teaming up with Solera Health to launch a new program to effectively address social determinants of health (SDOH) at the community level. The national roll-out of the program expected to launch in Q2 2019 will focus on the unique environmental and cultural influences and barriers to successfully coordinating regional SDOH resources at scale. Reaching Beyond Population Health By tailoring local SDOH resource recommendations to directly align with

Source: <https://hitconsultant.net/2019/03/26/bcbs-solera-health-social-determinants-of-health/#.XMCRj2I7mUk>

Source: <https://www.healthcarefinancenews.com/news/ama-unitedhealthcare-team-billing-codes-address-social-determinants-health>





# Case Study – Social Determinants of Health

## In Depth: Hospitals tackling social determinants are setting the course for the industry

STEVEN ROSS JOHNSON  

 TWEET

 SHARE

 SHARE

 EMAIL

 PRINT



Bill Healy

# SDOH Collection Tools



# SDOH Standardized Screening Tools

- ICD-10 Z Codes in Hospital Setting
- Electronic Health Record Platforms
- Protocol for Responding to and Assessing Patients' Assets, Risks, and Experiences Tool
- American Academy of Family Physicians Social Needs Screening Tool
- The Centers for Medicare & Medicaid Services Accountable Health Communities
- Self-Sufficiency Outcomes Matrix
- Roots to Health Survey

# **ICD-10 Z Codes – Social Determinants of Health**

**Table 1**  
**ICD-10-CM Code Categories**

ICD-10-CM Code Category	Problems/Risk Factors Included in Category
<b>Z55 – Problems related to education and literacy</b>	Illiteracy, schooling unavailable, underachievement in a school, educational maladjustment and discord with teachers and classmates.
<b>Z56 – Problems related to employment and unemployment</b>	Unemployment, change of job, threat of job loss, stressful work schedule, discord with boss and workmates, uncongenial work environment, sexual harassment on the job, and military deployment status.
<b>Z57 – Occupational exposure to risk factors</b>	Occupational exposure to noise, radiation, dust, environmental tobacco smoke, toxic agents in agriculture, toxic agents in other industries, extreme temperature, and vibration.
<b>Z59 – Problems related to housing and economic circumstances</b>	Homelessness, inadequate housing, discord with neighbors, lodgers and landlord, problems related to living in residential institutions, lack of adequate food and safe drinking water, extreme poverty, low income, insufficient social insurance and welfare support.
<b>Z60 – Problems related to social environment</b>	Adjustment to life-cycle transitions, living alone, acculturation difficulty, social exclusion and rejection, target of adverse discrimination and persecution.
<b>Z62 – Problems related to upbringing</b>	Inadequate parental supervision and control, parental overprotection, upbringing away from parents, child in welfare custody, institutional upbringing, hostility towards and scapegoating of child, inappropriate excessive parental pressure, personal history of abuse in childhood, personal history of neglect in childhood, Z62.819 Personal history of unspecified abuse in childhood, Parent-child conflict, and sibling rivalry.
<b>Z63 – Other problems related to primary support group, including family circumstances</b>	Absence of family member, disappearance and death of family member, disruption of family by separation and divorce, dependent relative needing care at home, stressful life events affecting family and household, stress on family due to return of family member from military deployment, alcoholism and drug addiction in family.
<b>Z64 – Problems related to certain psychosocial circumstances</b>	Unwanted pregnancy, multiparity, and discord with counselors.
<b>Z65 – Problems related to other psychosocial circumstances</b>	Conviction in civil and criminal proceedings without imprisonment, imprisonment and other incarceration, release from prison, other legal circumstances, victim of crime and terrorism, and exposure to disaster, war and other hostilities.

# Utilization of ICD-10 Z Codes in Missouri Hospitals — Baseline



Source: Missouri Hospital Association – [Decoding Social Determinants of Health, 2018](#)



# Top Z Codes Documented in Missouri

- Homelessness – Z690
- Unemployment – Z560
- Transportation – Z91.89
- Personal history of physical and sexual abuse in childhood – Z62810
- Problem related to primary support group – Z639
- Problem related to social environment – Z609
- Other problems related to social environment – Z608
- Problems related to housing and economic status – Z599

# Community Health Issues and Z Codes

Access to Health Care	Heart Disease	Diabetes	Mental Health	Cancer	Substance Use/Opioids
Problems related to education and literacy, unspecified (Z559)	Problems related to education and literacy, unspecified (Z559)	Problems related to education and literacy, unspecified (Z559)	Problems related to education and literacy, unspecified (Z559)	Problems related to education and literacy, unspecified (Z559)	Problems related to education and literacy, unspecified (Z559)
Insufficient social insurance and welfare support (Z597)	Lack of adequate food and safe drinking water (Z594)	Lack of adequate food and safe drinking water (Z594)	Personal history of physical and sexual abuse in childhood (Z62810)	Occupational exposure to toxic agents in other industries (Z575)	Personal history of adult physical and sexual abuse (Z91410)
Other problems related to housing and economic circumstances (Z598)	Patient's noncompliance with other medical treatment and regimen (Z9119)	Patient's noncompliance with other medical treatment and regimen (Z9119)	Problems related to primary support group, unspecified (Z639)	Patient's noncompliance with other medical treatment and regimen (Z9119)	Problems related to primary support group, unspecified (Z639)
Unemployment, unspecified (Z560)	Patient's other noncompliance with medication regimen (Z9114)	Patient's other noncompliance with medication regimen (Z9114)	Personal history of psychological abuse in childhood (Z62811)	Patient's other noncompliance with medication regimen (Z9114)	Personal history of psychological abuse in childhood (Z62811)

# Coding for Social Determinants of Health Updates — Missouri



Source: [January 2020 - Z Codes for Social Determinants of Health](#)

# Integrating Social Determinants of Health into Care Delivery



Source: <https://web.mhanet.com/quality-and-health-improvement.aspx>



# **Connecting the Dots Using the exploreMOhealth Platform**

# exploreMOhealth Platform



*New data released in spring 2020! [Learn more](#) ▼*



Source: exploreMOhealth <https://exploremohealth.org/>

# exploreMOhealth

## Magnifying Community Health in Missouri

Learn about [exploreMOhealth.org](https://exploreMOhealth.org) during National Public Health Week.

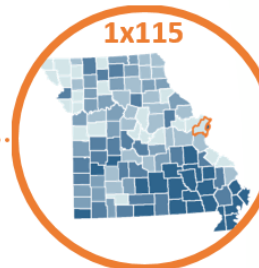
The places where we live, learn, work, worship and play have a profound influence on our health. To improve population health, stakeholders must identify the influence of geography on health factors through meaningful community health data. Many believe that your ZIP code is a more powerful predictor of health than your genetic code.

- Launched — March 21, 2018
- Designed to inform Community Health Needs Assessments with unique and meaningful data sources:
  - County-level data from Missouri Foundation for Health's County-Level Study
  - ZIP Code-level data from Hospital Industry Data Institute and Washington University School of Medicine's Missouri ZIP Health Rankings Project
  - Open to public

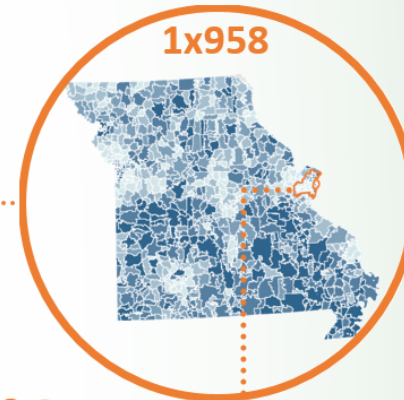
Missouri ranks **41<sup>st</sup> lowest** in the country for women and children's health in 2018.



Across Missouri's 115 counties, St. Louis County **rank 8<sup>th</sup>** while St. Louis city ranks **113<sup>th</sup>** in 2018.



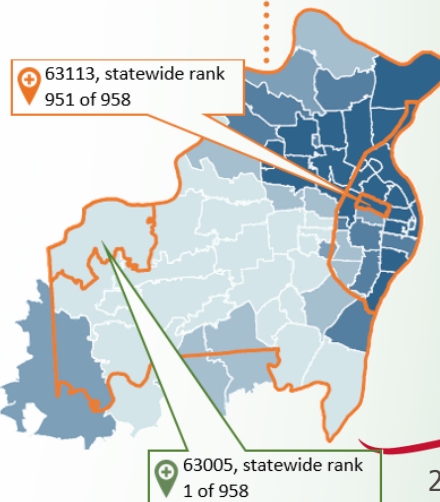
Across Missouri's 958 ZIP codes, St. Louis city & County have one that is ranked the healthiest in the state, and another that ranks 951<sup>st</sup>.

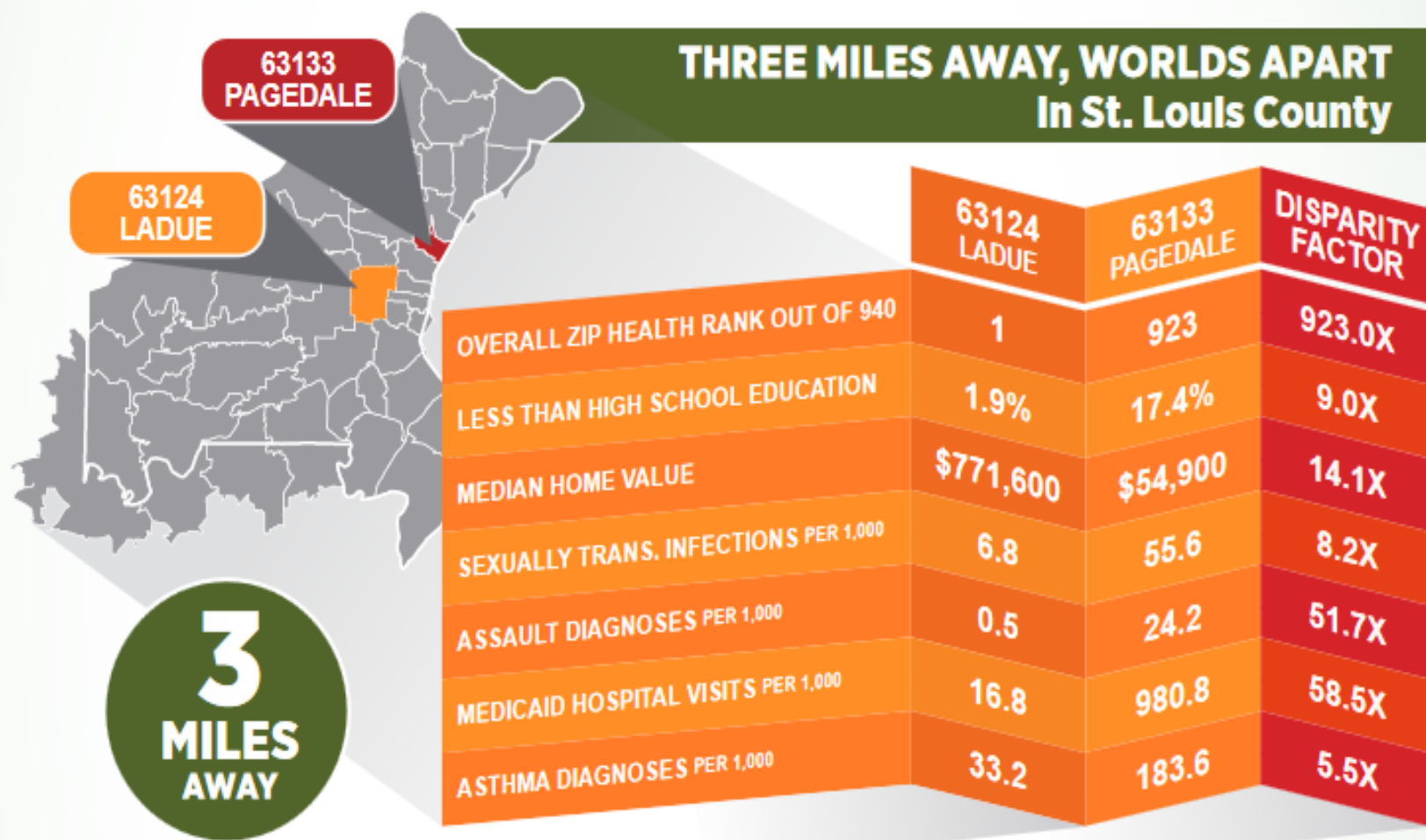


### Here's what we found for St. Louis city & County:

Separated by only 17 miles, 63005 in the St. Louis suburb of Chesterfield and 63113 in North city are worlds apart on health. Here are a few of the factors driving these differences:

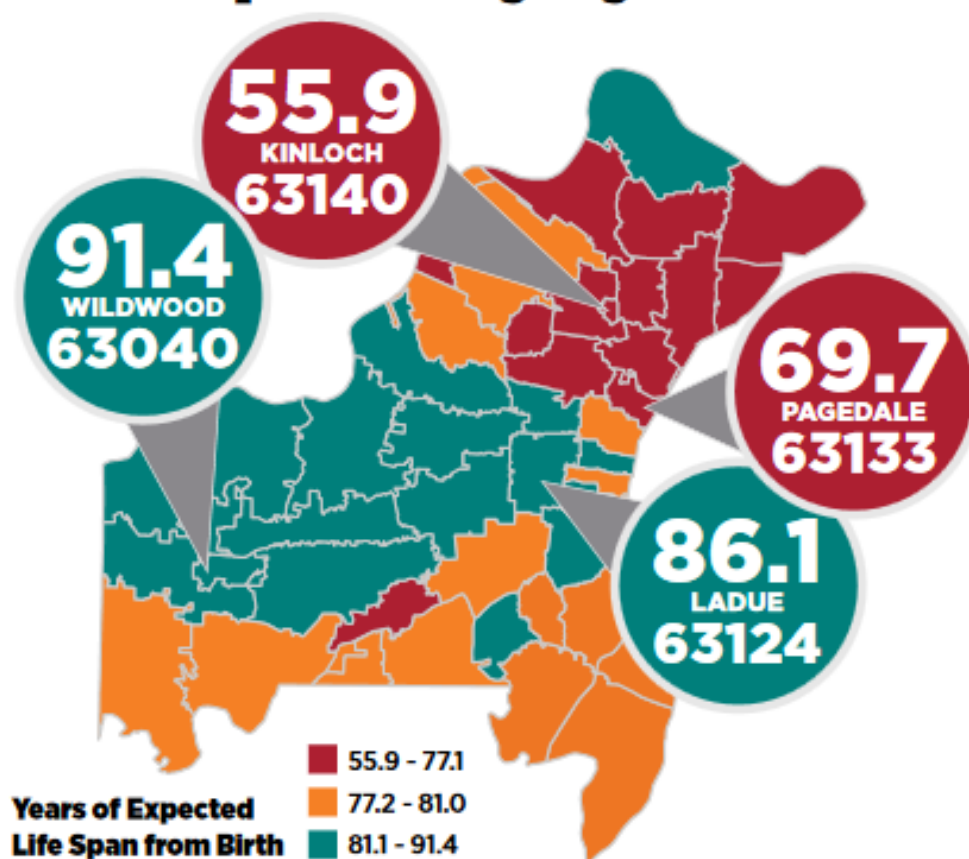
	63113 (951 of 958)	63005 (1 of 958)	Disparity Factor
Household Income	\$24,430	\$158,560	6.5x
Smoking per 1,000	463.8	50.3	9.2x
Obesity per 1,000	86.0	17.6	4.9x
Substance Use Disorder per 1,000	18.8	3.2	5.9x
Teen Pregnancy per 1,000	83.6	0.35	239x
Diabetes Diagnosis per 1,000	266.4	75.5	3.5x
ER Visits per 1,000	971.7	244.0	4.0x



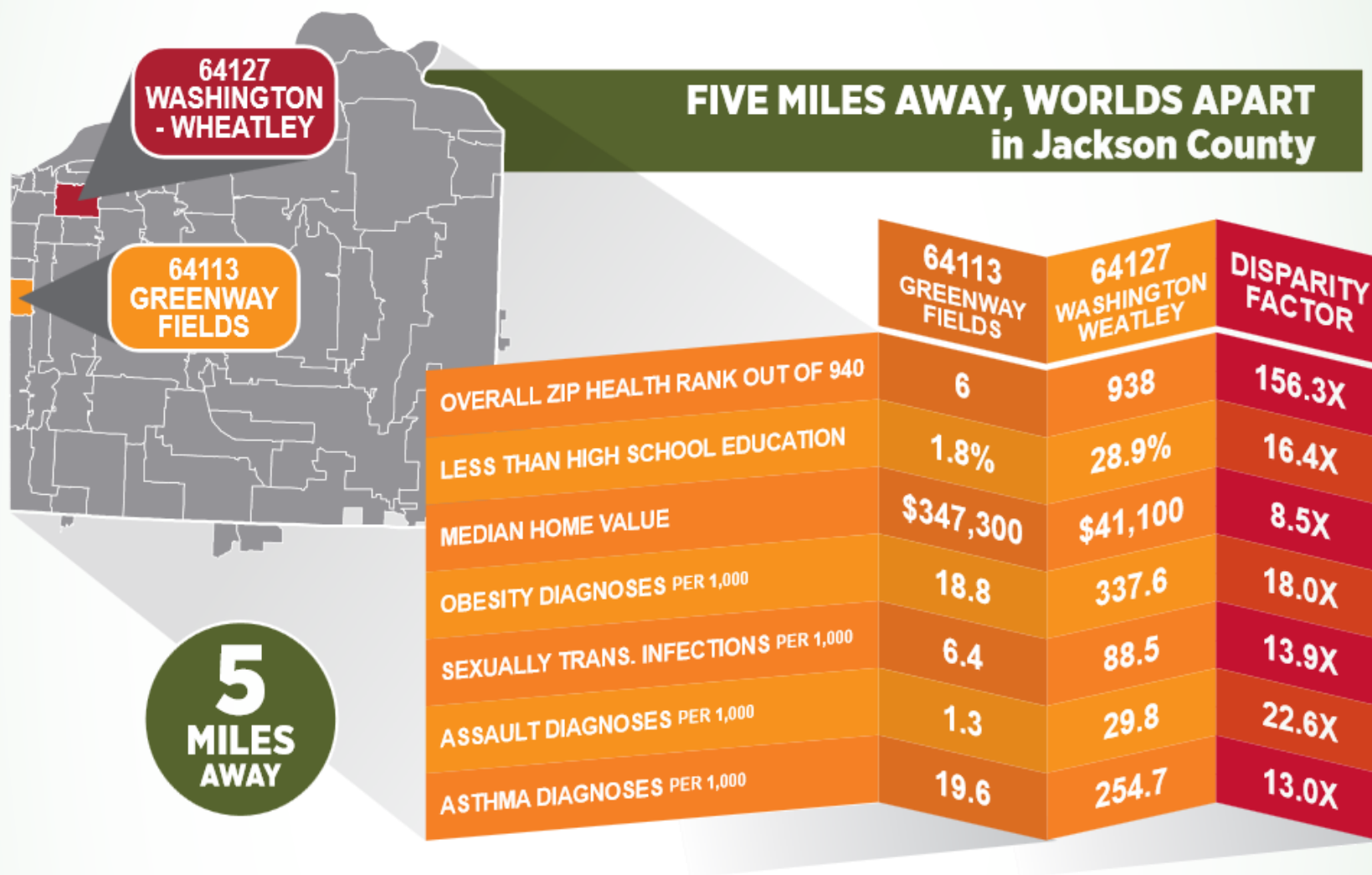




## St. Louis County Life Expectancy By ZIP Code



Source: 2010 Decennial Census, U.S. Census Bureau; 2010 MICA, Missouri Dept. of Health & Senior Services; Centers for Disease Control and Prevention; Methodology Adapted from For the Sake of All (<http://forethesakeofall.org/>).



Source: exploreMOhealth, 2019

# Social Referral Platforms

# Social Referral Platforms

- [Aunt Bertha](#)
- [CharityTracker](#)
- [First Call Technology](#)
- [Healthify](#)
- [Signify Community](#)
- [CrossTX](#)



# Health Equity



## Equality



## Equity





# References

- Decoding SDOH:  
[https://www.mhanet.com/mhaimages/Policy\\_Briefs/Policy\\_Brief\\_SDOH.pdf](https://www.mhanet.com/mhaimages/Policy_Briefs/Policy_Brief_SDOH.pdf)
- Deloitte: [www.deloitte.com/us/social-determinants-of-health](http://www.deloitte.com/us/social-determinants-of-health)
- The Permanente Journal  
<https://www.ncbi.nlm.nih.gov/pmc/articles/PMC6207437/>
- USC-Brookings Schaeffer Initiative for Health Policy  
[https://www.brookings.edu/wp-content/uploads/2018/01/es\\_20180123\\_un-burying-the-lead-final.pdf](https://www.brookings.edu/wp-content/uploads/2018/01/es_20180123_un-burying-the-lead-final.pdf)

# References

- 2018 Wolters Kluwer Health, In:  
<https://alliedhealth.ceconnection.com/ovidfiles/01269241-201809000-00002.pdf;jsessionid=CA97A3D9445154A1C5EB2EAC0DA341C4>
- Health Affairs, Standardizing Social Determinants Of Health Assessments, " Health Affairs Blog, March 18, 2019  
<https://www.healthaffairs.org/doi/10.1377/hblog20190311.823116/full/>

# References

- Modern Healthcare  
<https://www.modernhealthcare.com/article/20180825/NEWS/180809949/in-depth-hospitals-tackling-social-determinants-are-setting-the-course-for-the-industry>



# Contact Information

Stephen Njenga, MPH, MHA, CPHQ, CPPS  
Director of Performance Measurement Compliance  
Missouri Hospital Association  
[snjenga@mhanet.com](mailto:snjenga@mhanet.com)  
573-893-3700, ext. 1325