



Our WHY



**ALL GOOD THINGS
START WITH A
DREAM. *THE DREAM
BECOMES A VISION.
THE VISION BECOMES
A PLAN. THE PLAN
BECOMES A REALITY.***

Vision for Expansion



Census

Turning away patients when all rooms were full

Only independent, free standing Children's Hospital in the region



Growth

Expanding Specialized Services

Adding Physicians



Consolidation

NICU space leased in adjacent hospital (expires September 2021)

Support Services space was lacking (Kitchen, Cafeteria, CS, etc.)

Helipad access for Transport

Employee parking via shuttle

Geographically Challenged

Children's NICU
via Skywalk

Children's
Helipad



Children's
Operating
Rooms

Children's
Trauma
Rooms

Employee Dissatisfier

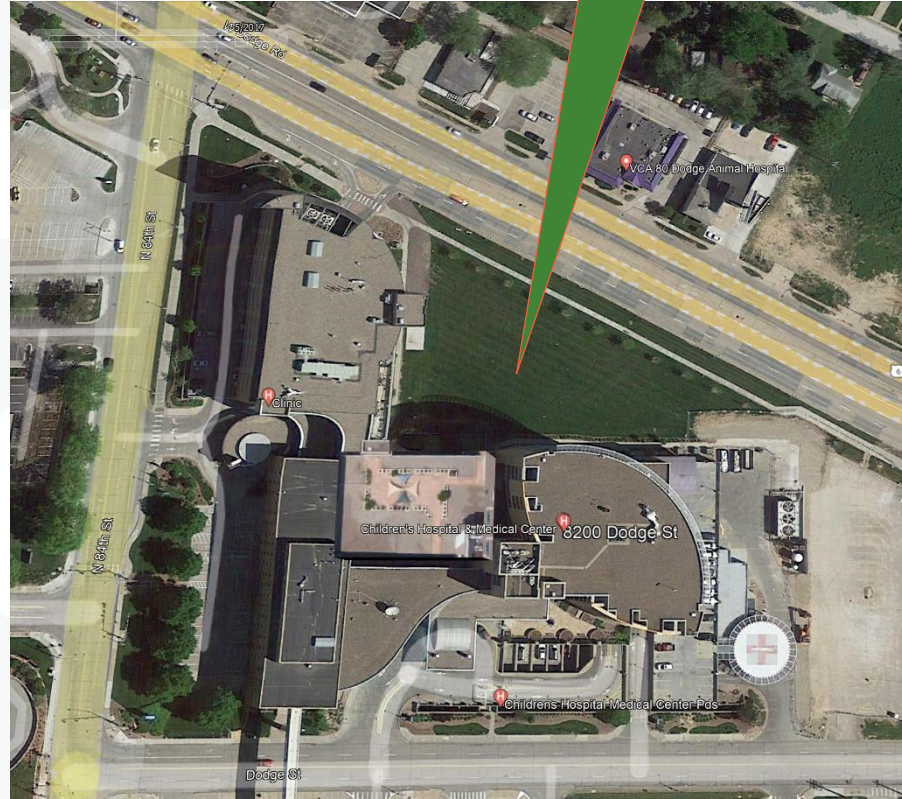
Children's Hospital &
Medical Center



Children's Hospital & Medical Center
Employee Parking

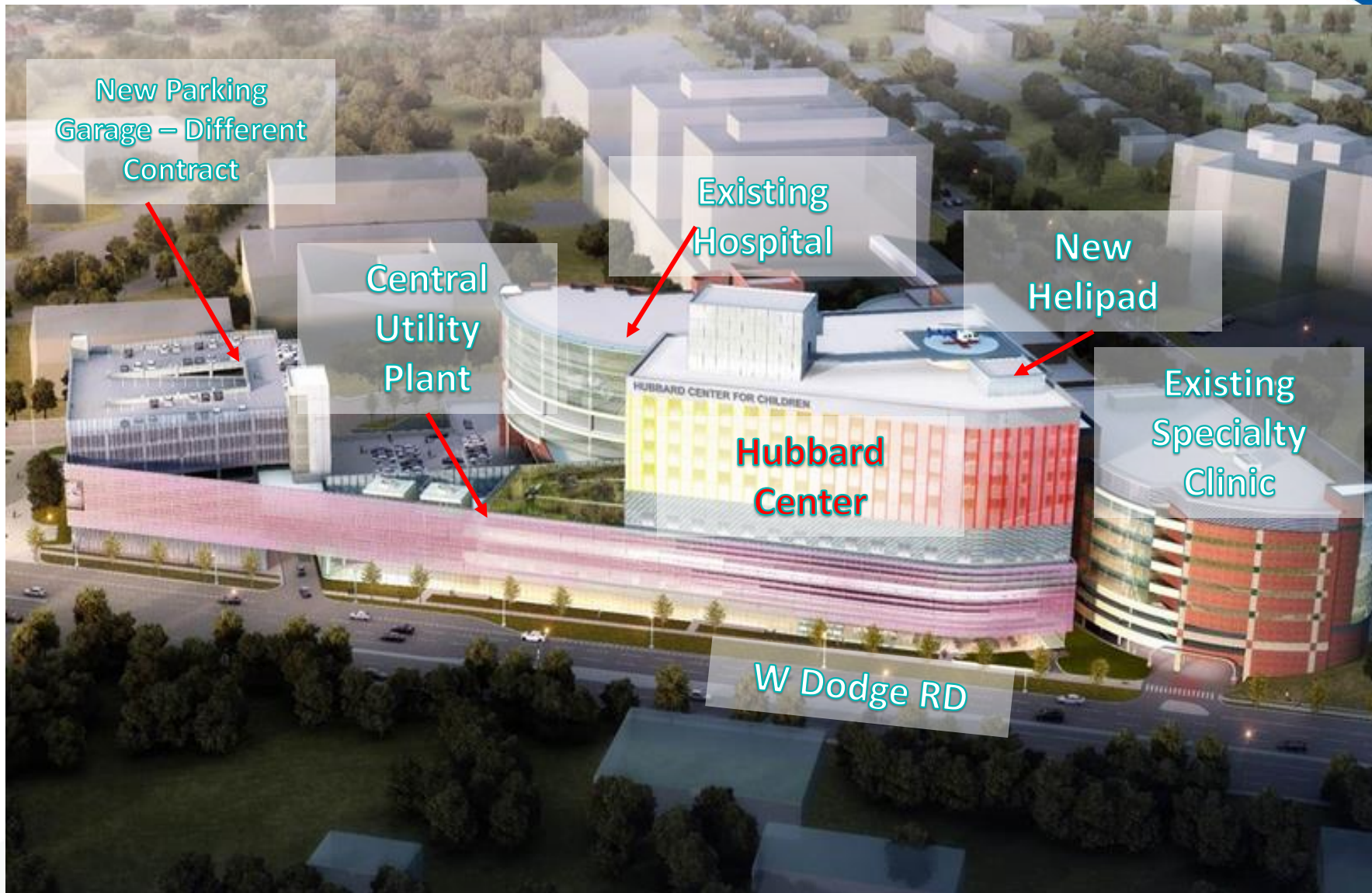
Project Site Confines

- Existing hospital on South
- Specialty Clinics on West
- West Dodge Road on North
- Parking Garage on the East
- Building Connections
- Existing utilities to move



Courage doesn't
mean you don't
get afraid.
Courage means
you don't let fear
stop you.

Project Concept



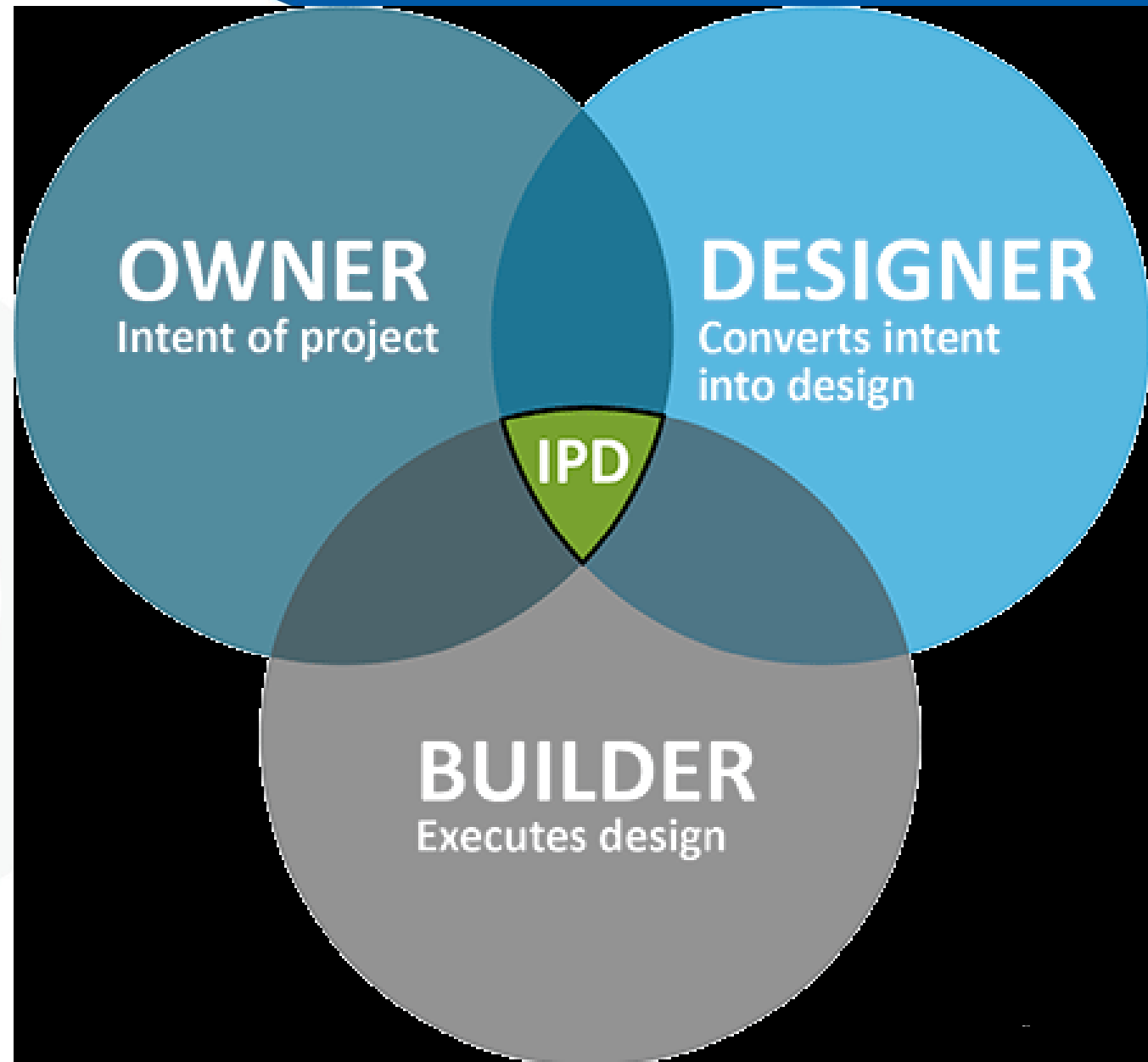
- **Schedule (August 2021)**
- **Program vs Budget**
- **Multiple Stakeholders**
- **High Complexity**
- **Site Constraints**



Integrated
Project
Delivery (IPD)

Integrated Project Delivery Model

Integrated Project Delivery (IPD) is a delivery model for delivering construction projects using a single contract for design and construction with a shared risk/reward model, guaranteed costs, waivers of liability between team members, an operating system based on lean principles, and a collaborative culture.



Integrated Project Delivery Team



Waldinger Corp.
Mechanical



AWS
Envelope

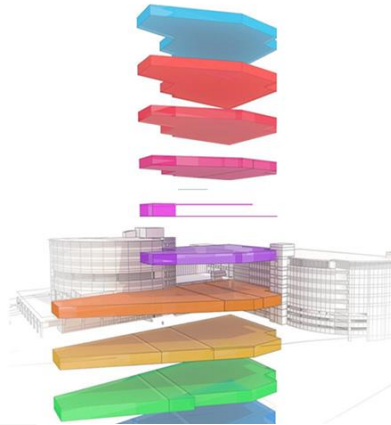
Electric Company of Omaha
Electrical

E&K Companies
Metal Stud / Drywall

Drake Williams/Davis Erection
Steel Fabricator/ Erector

Early Concept and Stack Models

- HELIPAD-ROOF L8
- NICU L7
- NICU/FETAL CARE CENTER L6
- HEMATOLOGY/ONCOLOGY UNIT L5
- PICU / SHELL L4
- MECHANICAL L3
- CARDIAC CARE UNIT L2
- SURGERY, OUT-PATIENT PHARMACY L1
- RADIOLOGY, EMERGENCY, PHARMACY LL1
- KITCHEN, DINING, CONFERENCE LL3



ROOFTOP | HELIPAD

7TH FLOOR | NEONATAL INTENSIVE CARE UNIT

6TH FLOOR | FETAL CARE CENTER / NEONATAL INTENSIVE CARE UNIT

5TH FLOOR | ONCOLOGY UNIT

4TH FLOOR | PEDIATRIC INTENSIVE CARE UNIT (PICU)

3RD FLOOR | MECHANICAL

2ND FLOOR | CARDIAC CARE UNIT

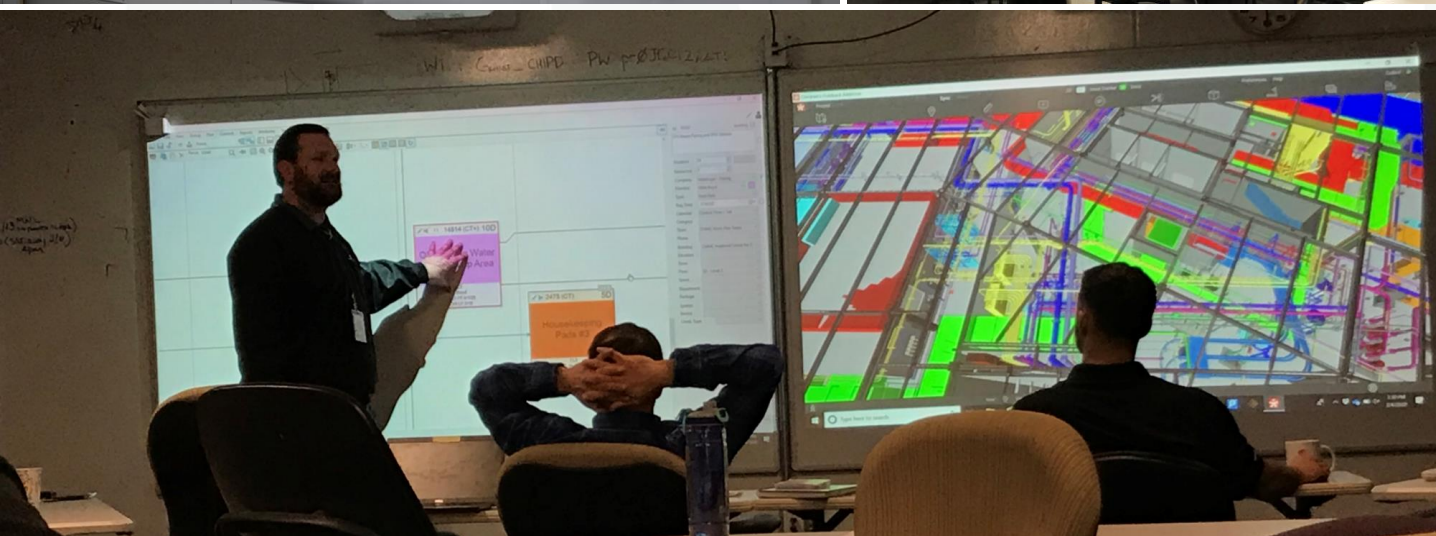
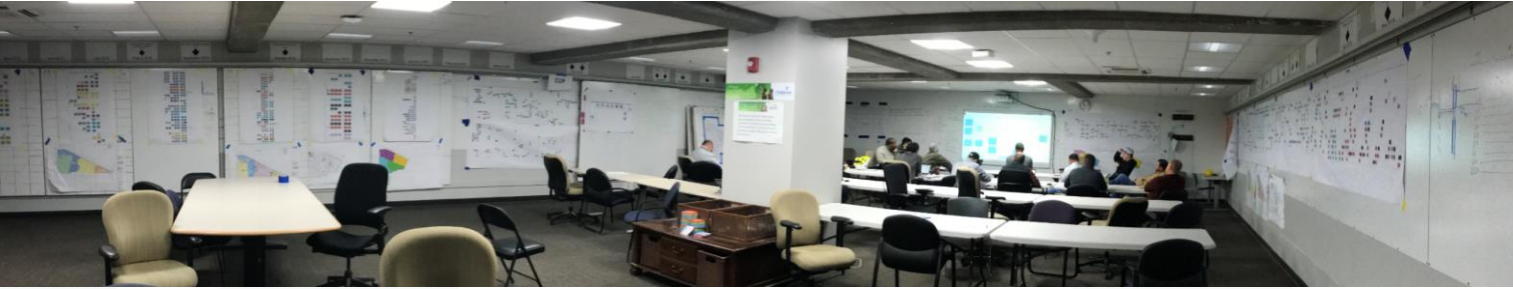
1ST FLOOR | SURGICAL SPACE

LL1 | EMERGENCY DEPARTMENT / RADIOLOGY

LL3 | KITCHEN & CAFETERIA / CONFERENCE CENTER / SUPPORT SERVICES

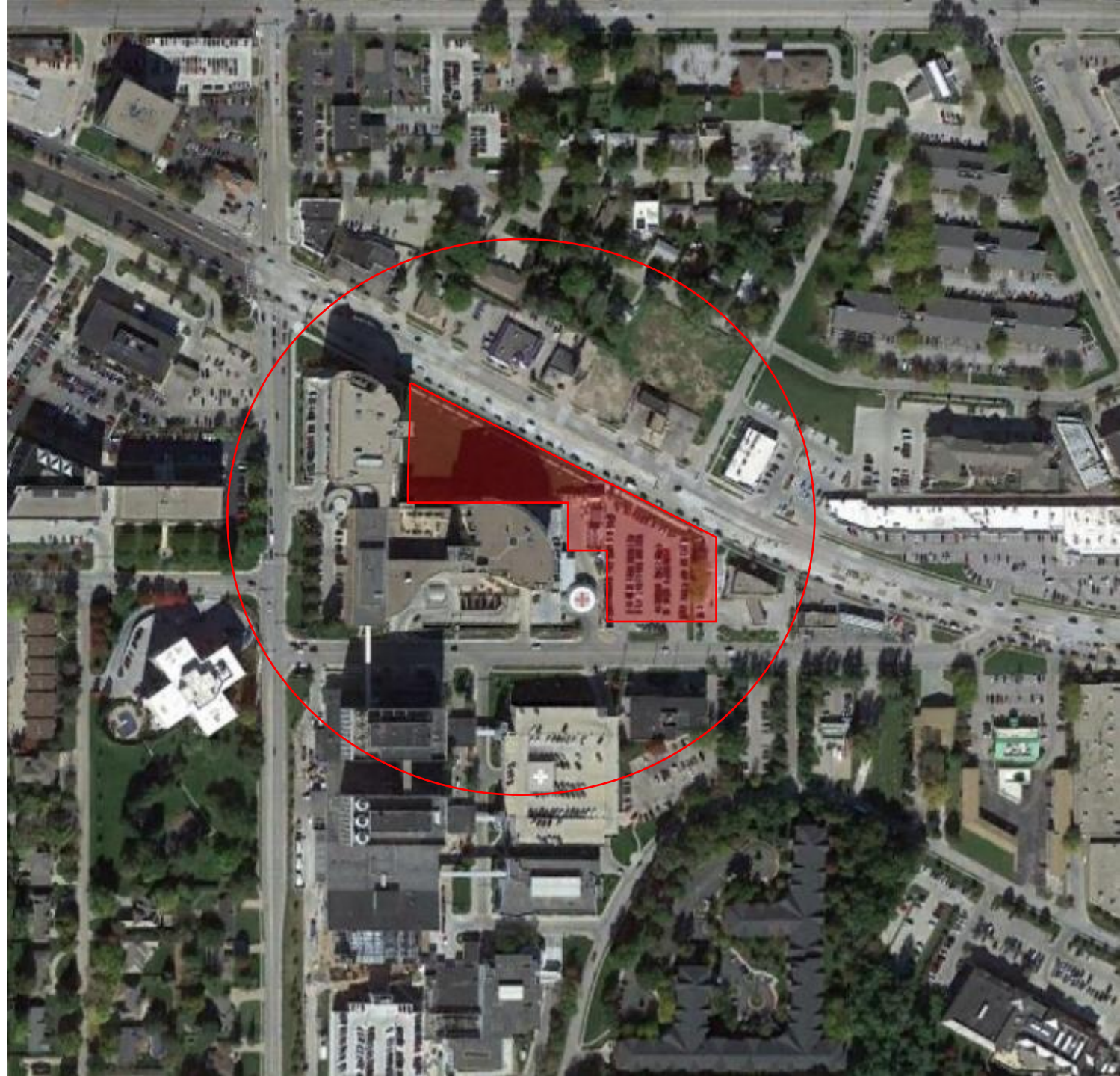


IPD “Big Room” Concept



Project Components

- Hubbard Center for Children
 - 427,000 SF Addition
 - 42,000 SF Renovation
- Employee Parking Garage
 - 762 Stalls
- Project Budget \$ 410 M



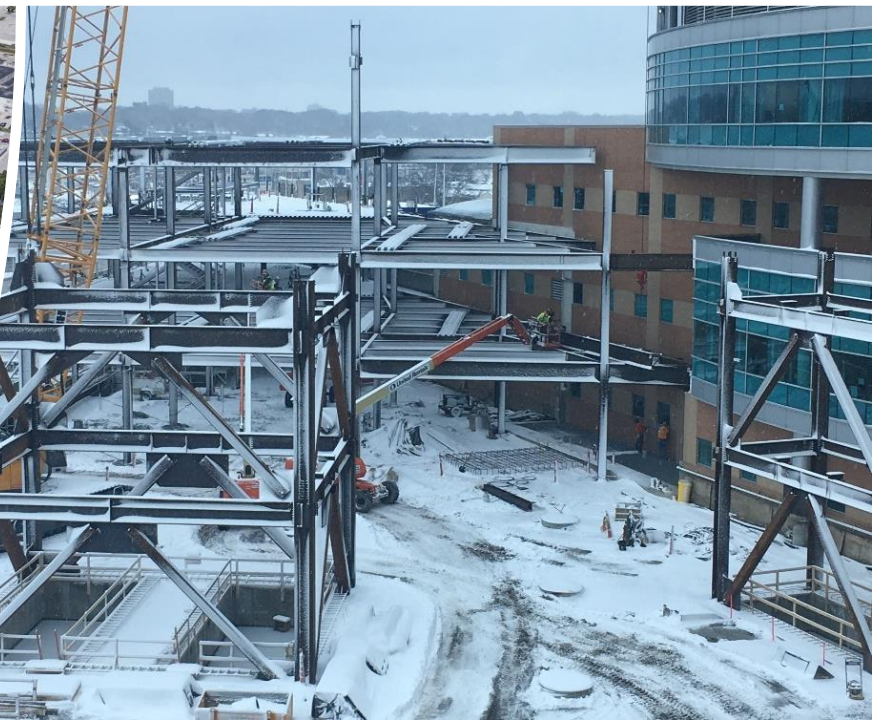


Project Challenge

- Major Utility Moves

Project Challenges

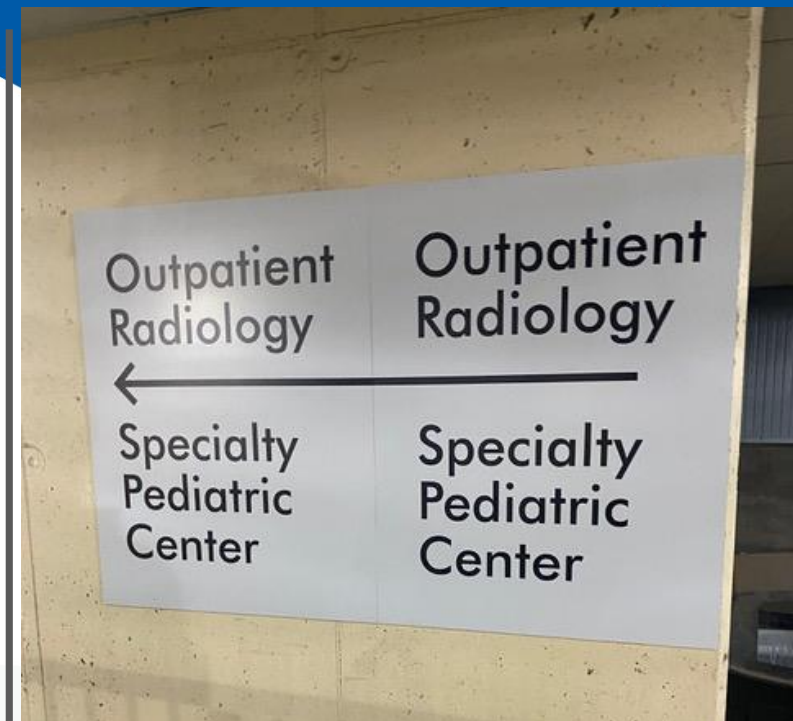
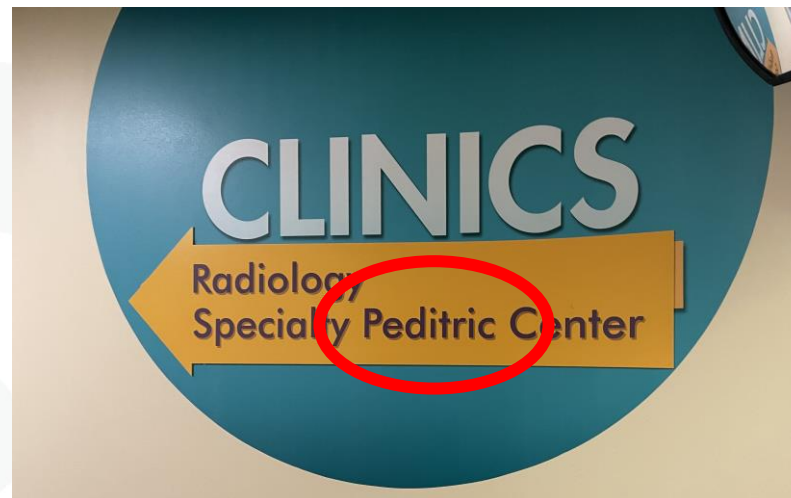
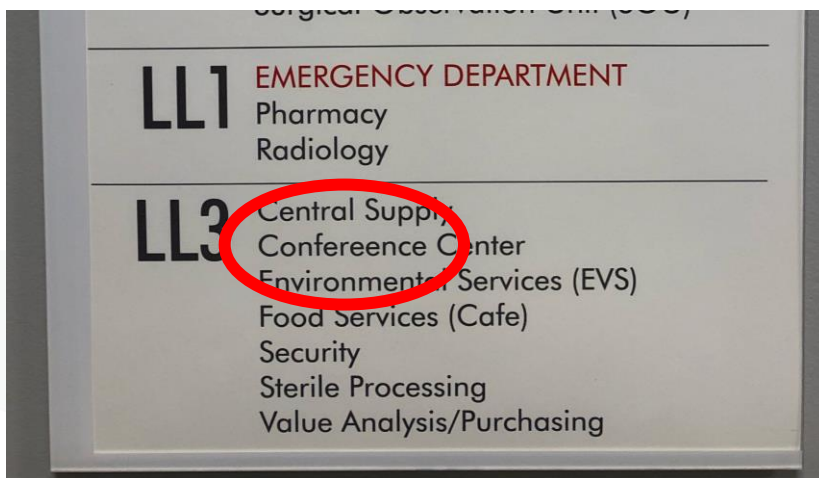
- Access
- Wind and Weather





Project Challenge





Project Challenge: Spelling



Hubbard Center for Children

Nine floors above
west Dodge grade

Connection to
existing hospital
tower and SPC

New parking
structure for
employees

Previous Hospital
Space: 315,000
Square Feet

After Hubbard
Addition: 674,000
Square Feet

Renovation of
42,000 sq ft of
existing space

More than 100
additional patient
care beds

On Time, On Budget

Seven newly
outfitted Operating
Rooms, including an
MR/OR




Children's
HOSPITAL & MEDICAL CENTER

Bragging Rights

First IPD Project Completed in Omaha

Largest air handler in Nebraska

Largest trauma elevator in Nebraska (16,000 lb MRI)

Opening Day: August 29, 2021

Patient Moves

- 35 NICU
- 10 PICU
- 14 CCU



**Command
Center**



5:59am
ED Patient

7:00am
MRI Scan

7:45am
Patient Meal

9:42am
NICU Patient
Move

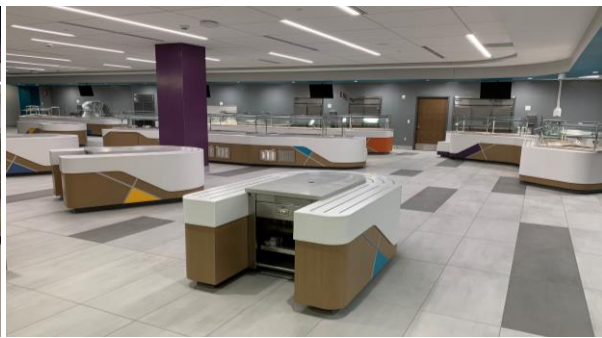
10:11am
CCU Patient
Move

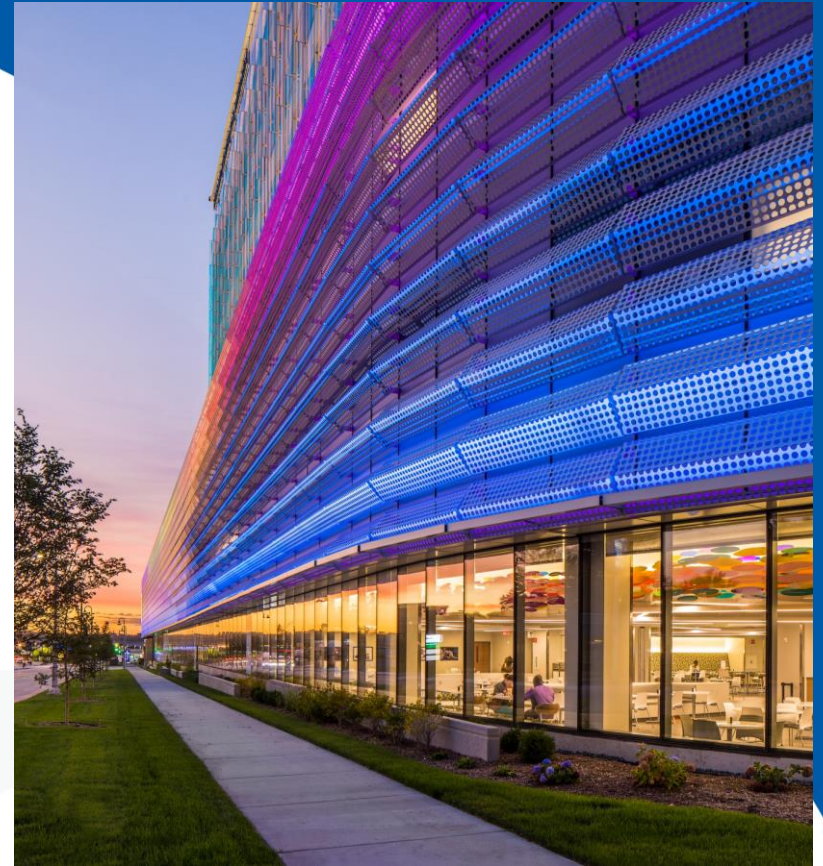
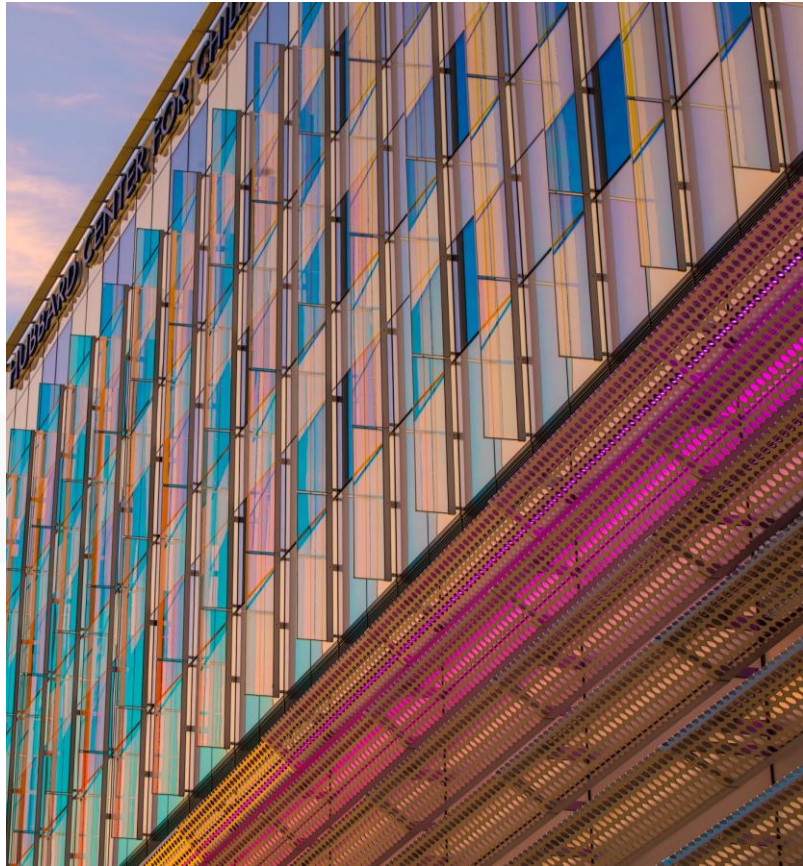
11:42am
PICU Patient
Move

12:41pm
Helicopter
Landing

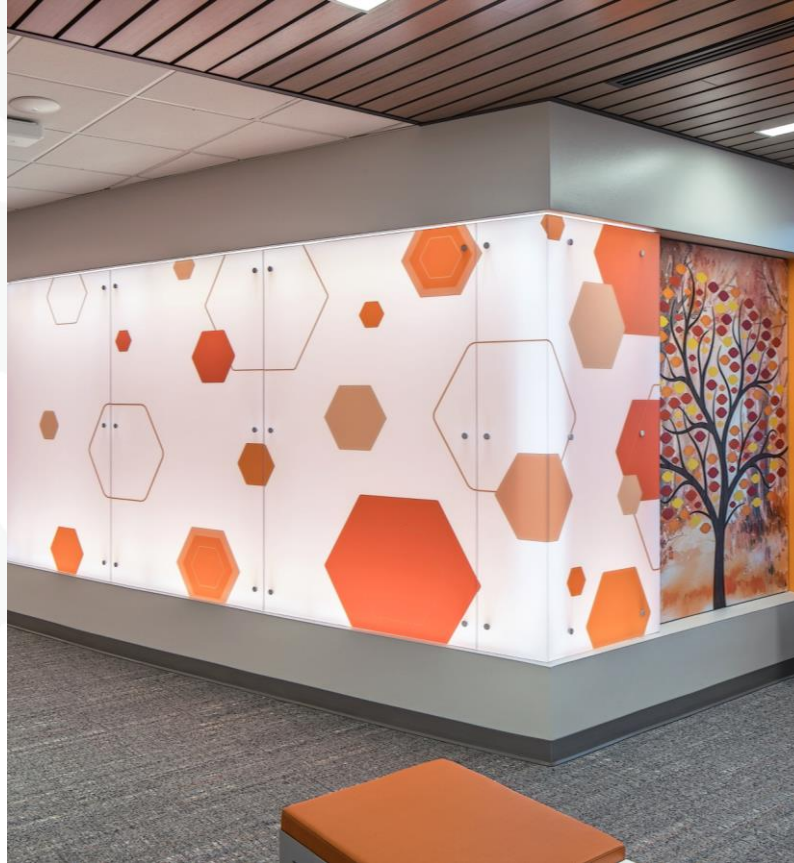
2:45pm
Patient Moves
Complete

Fun with Lighting





Building Exterior



Patient Care Areas

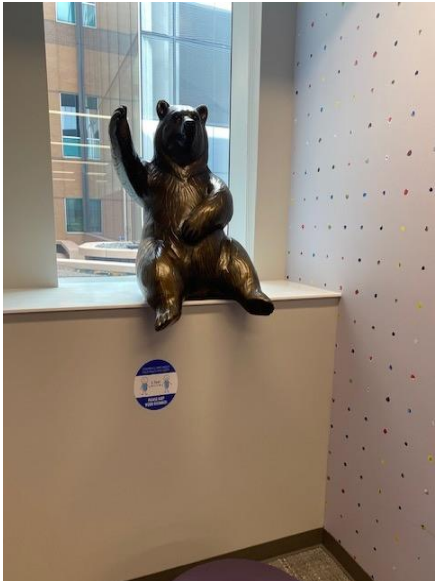


Patient Care Areas



Support Areas







Our WHY