

Social Determinants of Health (SDoH) Solution

COMPASS



Healthcare Technology. Transformation. Transition. Transparency.

COMPASS Social Determinants of Health (SDOH)



Data

- Patient Demographics/EMR
- Assessments (RCI, PHQ-9, DLA-20, AHC HRSN)

Prediction

- Risk Stratification
- Predictive Analytics
- Likelihood of Readmission & ER visits

Patient Identification

- SDOH Needs Identified (Housing, Food Insecurity, Transportation, etc.)
- Alerts and Notifications
- Patient Engagement

Community Resources

- Activation and Enrollment
- Resource Directory
- Continually Monitor Patient
- Detect Changes to Anticipate Interventions

COMPASS Social Determinants of Health (SDOH) Solution

- ✓ SaaS-Based Turnkey Platform
- ✓ Production Ready: Over 3000 Users, 2300 Providers, and 1.5M Members
 - ✓ NE Department of Health & Human Services, Division of Behavioral Health
 - ✓ CO Department of Health Services, Office of Behavioral Health

OH4T Craig Christenson

Manage Encounter (900000106) ✕

Add to Waitlist Submit for Authorization Cancel Without an Admission Remove Encounter Save Cancel Print

PCP Last Seen	Unknown	DDS Last Seen	Unknown
Height	Unknown	Has Attempted Suicide 30 Days?	Unknown
Weight (lbs)		Num Opioid Rx Per Day	
Is Tobacco User	No Response	Num Non-Opioid Rx Per Day	
Has Tried to Quit Past 12 Months?	No Response	Num Psychotropic Rx Per Day	
Is Nicotine Dependent	No Response	Poor Health in Last 30 Days (Physical)	days
Is Aware of Quitline	No Response	Poor Health in Last 30 Days (Mental)	days
Quitline Contacted	No Response		

Why now? Please select all that apply:

- There has been a sudden change in status of consumer's substance use (either in terms of frequency, amount, substance of choice or method of use)
- Consumer has reported recent adverse life experiences that, without treatment, will lead to marked decompensation in the member's current functioning
- Consumer has had recent legal involvement
- Consumer has reported an increase in mentally unhealthy days leading to a significant change in ability to function
- Consumer has reported thoughts about self-harm that pose danger to self (if self-harming thoughts are chronic/ongoing, do not report)

Navigation Sidebar: Home, Add, Search, Health Status, Trauma History, Diagnosis, Substance Use, Questionnaire, Reviews, Notes, Extended Data

Industry Leading Assessment Features

- ✓ Standard and Custom Assessments
- ✓ Individual Data Points for Analytics
- ✓ Trending Analysis
- ✓ Predictive Analytics
- ✓ Reactive Scoring



Introducing the RCI Assessment

RCI framework models social determinants of health

Social Capital	Physical Capital	Cultural Capital
Family Support Significant Other Social Support Social Mobility Healthy Lifestyle Access to Healthcare Safety	General Health Mental Wellbeing Nutrition Employment Education Housing Situation Transportation Clothing	Beliefs Spirituality Sense of Purpose Cultural Relevance Sense of Community Values

Recovery capital framework models social determinants of health domains and indicators

SDOH Domains & Indicators

ICD-10©	Protocol for Responding to and Assessing Patients' Assets, Risks, and Experiences (PRAPARE©)	Health Leads©
Childhood	Access to Health Care	Behavioral/Mental Health
Education	Child Care	Childcare
Employment	Clothing	Education
Housing	Education	Employment
Income	Employment	Food Insecurity
Literacy	Family Living Situation	Health Behaviors
Occupational Exposure	Food Insecurity	Housing Instability
Other Psychosocial Needs	Health Insurance	Immigration Status
Psychosocial Needs	Housing Instability	Income
Social Environment	Incarceration History (optional)	Language
Social Support	Income	Race and Ethnicity
	Interpersonal Safety (optional)	Social Support and Social Isolation
	Language	Transportation
	Migrant and/or Seasonal Worker	Utilities
	Race and Ethnicity	Violence
	Refugee (optional)	
	Safe Environment (optional)	
	Social Support/Social Isolation	
	Stress	
	Transportation	
	Utilities (including phone)	
	Veteran Status	

SDOH Domains & Indicators

Accountable Health Communities	National Academy of Medicine		Healthy People 2020	
Disabilities (Optional)	Acculturation	Sexual Orientation	Access to Foods that Support Healthy Eating	Housing Instability
Education (Optional)	Dual Eligibility	Social Support	Access to Health Care	Incarceration
Employment (Optional)	Education	Urbanicity/Rurality	Access to Primary Care	Language and Literacy
Family and Community Support (Optional)	Gender Identity	Wealth	Civic Participation	Poverty
Financial Strain (Optional)	Housing		Crime and Violence	Quality of Housing
Food Insecurity	Income		Discrimination	Social Cohesion
Housing Instability	Language		Early Childhood Education and Development	
Interpersonal Safety	Living Alone		Employment	
Mental Health (Optional)	Marital/Partnership Status		Enrollment in Higher Education	
Physical Activity (Optional)	Nativity		Environmental Conditions	
Substance Use (Optional)	Neighborhood Deprivation		Food Insecurity	
Transportation	Environmental Measures		Health Literacy	
Utilities	Race and Ethnicity		High School Graduation	

68 questions

consistent structure takes less than 5-10 mins to complete

100 point scale

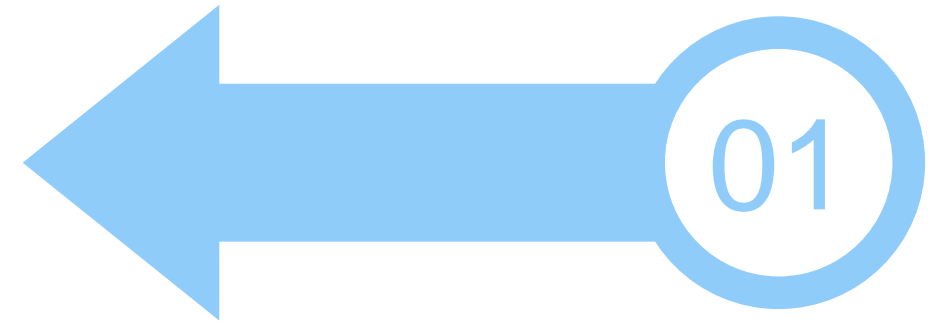
scoring is raw and individualized

30 day intervals

strong wellbeing indicators when scored every 30 days

One **instrument**
provides micro and
macro views of
wellbeing

INDIVIDUAL
Inform personalized care
and support; track
change

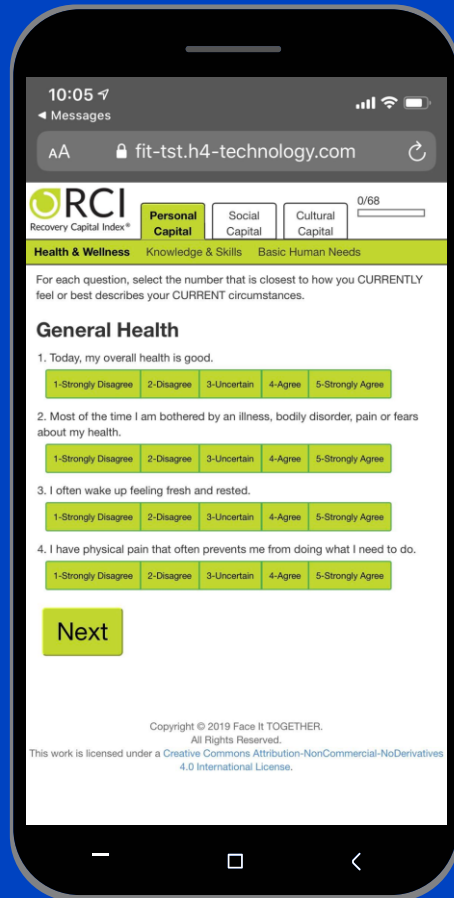


ORGANIZATION
Identify program needs
and measure long-term
outcomes



COMMUNITY
Map deficits, design
solutions, and effectively
allocate resources





Mobile delivery

The RCI is automatically sent to a patient's email or phone via SMS based on preferences and completed online

Email and **text** reach patients where they are

90%

US Population Own Smartphones

99%

Text arwithin 3 mintues.

Stats from Mobile Text Messsaging for Health report from National Institute of Health.

<https://www.ncbi.nlm.nih.gov/pmc/articles/PMC4406229/>

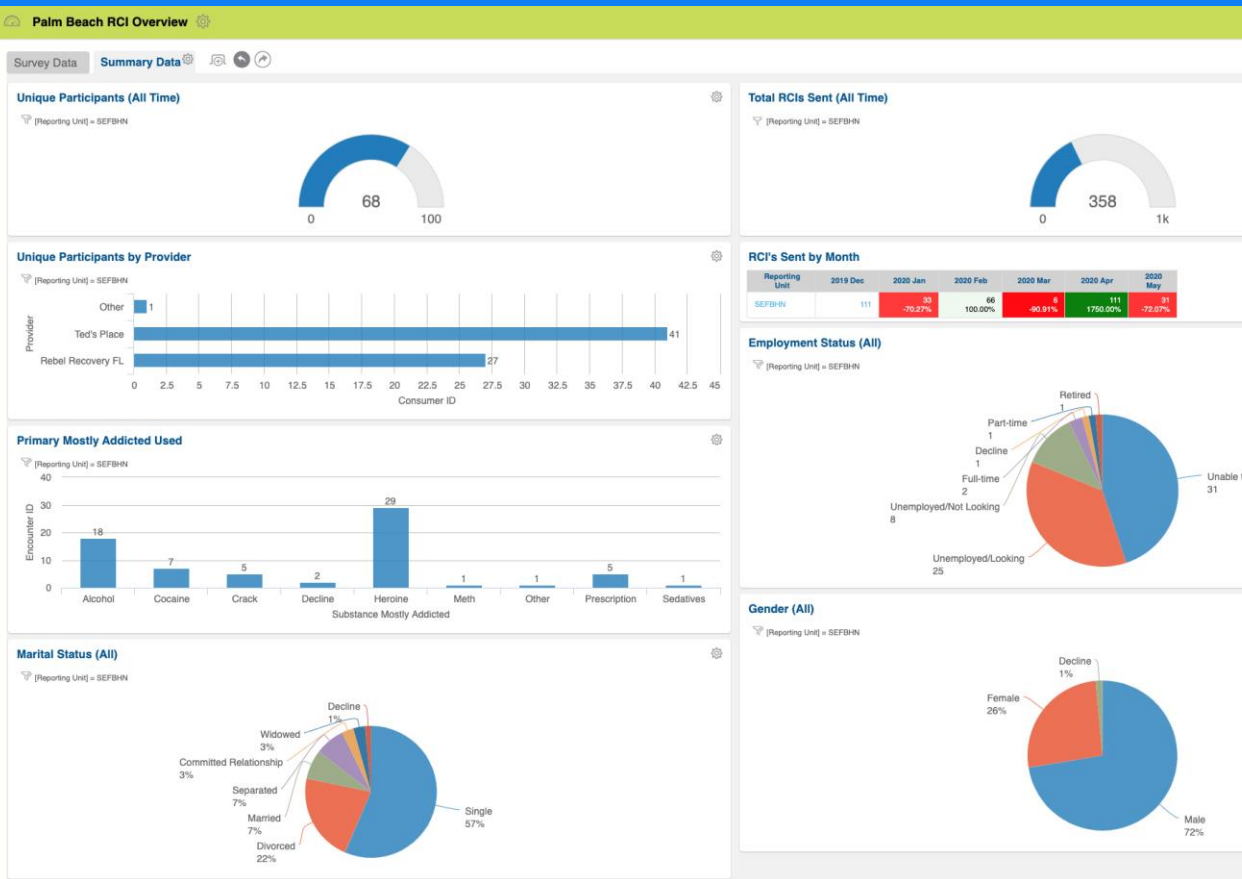
Additionally, According to Pew Research, when individuals were presented web surveys through text and email, there were more opens and completions than email or text alone.

<https://www.pewresearch.org/methods/2016/09/07/text-message-notification-for-web-surveys/>

79%

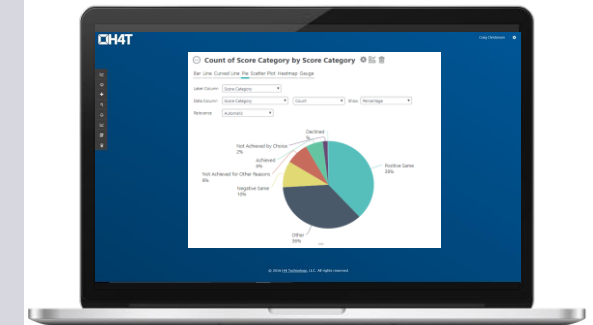
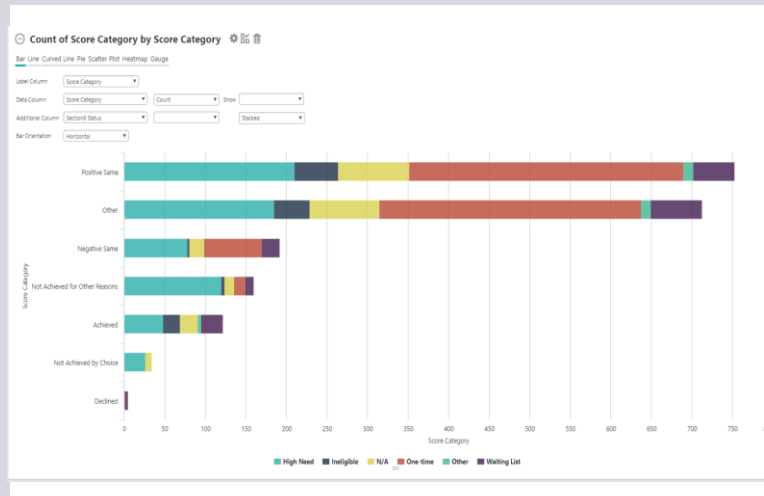
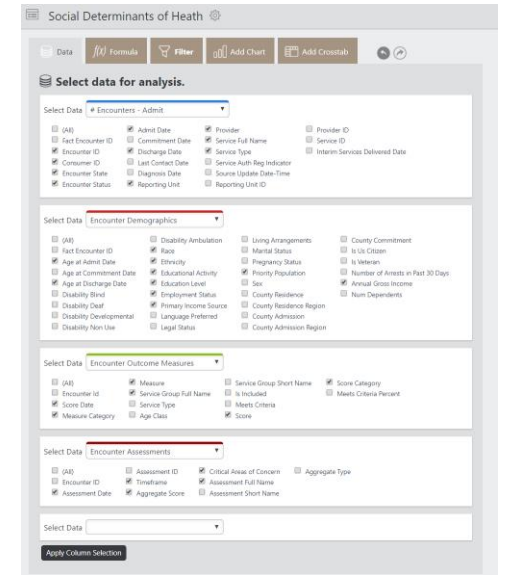
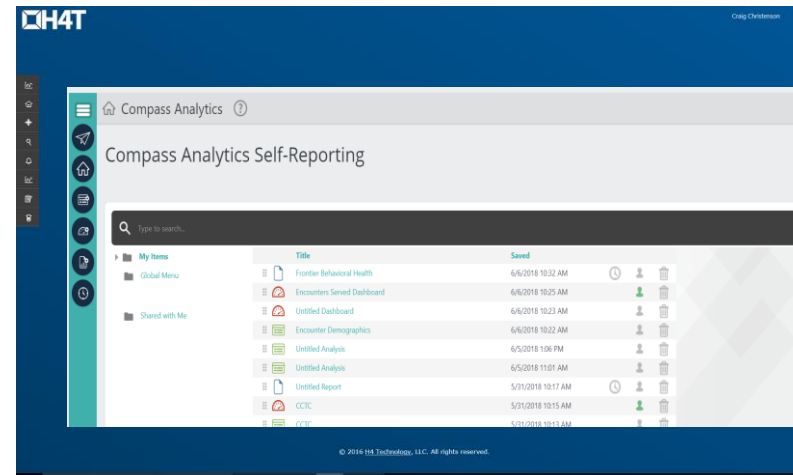
Medicaid Patients are more likely to use text messaging than private insured individuals

Fully-Functional Embedded Business Intelligence for Data Visualization



Self-Service Reporting, Dashboards & Analytics

- Select Data Fields
- Create Analysis
- Select Visualization
- Build Dashboard
- Use Report Builder
- Save and Share your work with other users.
- Schedule Reports to auto run.



SaaS Solution Designed to Automatically and Consistently obtain Feedback for Hospitals

NHA Services Partner



Get started today! NHA special offer **50% off**
\$6000 per year per provider.
Unlimited Users, Unlimited patients.

Thank You! Any Questions?

Let's Talk

E craig@h4-technology.com

W www.h4-technology.com

C 402-598-6561