



The influential voice of Nebraska's hospitals

CAPTURE Falls

Dawn Venema, PT, PhD

Victoria Kennel, PhD

Matt McManigal, BS, MS

University of Nebraska Medical Center

Learning Objective

- Describe the CAPTURE and CATCH RURAL Falls programs and methods to engage with each program

Acknowledgements: Funding



This project is supported by:
Medicare Rural Hospital Flexibility Program subgrant contracts #69460-04, #69595-04, #73918-04, #38725-Y3, #45364-Y3, #50796-Y3, #57119-Y3, #63116-Y3, and #69509-Y3 from the Nebraska Department of Health and Human Services, Division of Public Health and the Nebraska Office of Rural Health. (2015 – present)



This project builds from a previous project supported by grant number R18HS021429 from the Agency for Healthcare Research and Quality. The content is solely the responsibility of the authors and does not necessarily represent the official views of the Agency for Healthcare Research and Quality. (2012 – 2015)

Introductions - UNMC Team



Dawn Venema, PT, PhD

- Physical Therapist
- 20+ years of experience in geriatric physical therapy; provides the clinical perspective of fall risk reduction



Victoria (Vicki) Kennel, PhD

- Industrial Organizational Psychologist
- 10+ years of experience in organizational psychology; provides the human behavior, team, organizational, and quality improvement perspective



Matt McManigal, BS, MS

- Systems Engineering, Patient Oriented Research
- Provides the expertise in analysis, organization, and presentation of data

CAPTURE Falls Program

Collaboration and Proactive Teamwork Used to Reduce Falls

CAPTURE Falls is a quality improvement program
to support the implementation of evidence-based fall risk reduction practices
using an interprofessional team approach
to reduce the risk of inpatient falls in critical access hospitals

How to Engage with the CAPTURE Falls Program

We are here to support YOU!

Initial Steps

- Begin engagement or re-engagement with UNMC team on a rolling basis
- Agreement to acknowledge relationship with NCPS
- Form your team
- Complete gap analysis
- Form action plan

Resources Available

- At least one consultative meeting with UNMC team to review gap analysis and action plan
- Use of CAPTURE Falls online roadmap
- **Additional consultation with UNMC team “on-demand”**
- Quarterly collaborative calls for education and program updates
- Know Falls database for reporting and learning from falls

Sustainment

- Monitor progress towards goals on action plan
- Monitor fall rates; share annual fall rates and compare with benchmarks
- Update gap analysis when appropriate

Can also “jump in” anywhere in your fall risk reduction program
for focused topic-specific support

Relationship with the Nebraska Coalition for Patient Safety (NCPS)

- UNMC CAPTURE Falls is an analytic subcontractor for NCPS – by working with us, you are working with a Patient Safety Organization (PSO)
 - Confidentiality and privilege protections of the Federal Patient Safety and Quality Improvement Act of 2005 apply to our work with hospitals
 - Reporting burden for hospitals who report to both NCPS and UNMC CAPTURE Falls is reduced
 - UNMC CAPTURE Falls and NCPS work together to enhance knowledge about fall events

Relationship with the Nebraska Coalition for Patient Safety (NCPS)

- Hospitals that participate in UNMC CAPTURE Falls sign an agreement with UNMC
 - Acknowledges our relationship with NCPS
 - Discloses that we share fall event data with NCPS for those hospitals who are NCPS members
 - Discloses the potential we will use de-identified fall event data for research via a UNMC Institutional Review Board-approved data registry

Fall Risk Reduction Program Gap Analysis

- Fall Risk Reduction Program Assessment tool:
 - <https://www.unmc.edu/patient-safety/documents/fall-risk-reduction-program-assess.pdf>
 - Can also share a link to complete electronically through REDCap
- Conduct an honest assessment of the current state of your fall risk reduction program and its performance

CAPTURE Falls Roadmap

<https://www.unmc.edu/patient-safety/capturefalls/roadmap/index.html>

Roadmap



Welcome to the CAPTURE Falls "roadmap." This roadmap provides an organizing framework of activities, educational resources, and tools to help you improve your fall risk reduction program. Different hospitals may want or need to visit different stops along the way (see stops below). Every hospital, however, is ultimately working towards the same destination of keeping their patients safe from falls and fall-related injury.

CAPTURE Falls Roadmap

<https://www.unmc.edu/patient-safety/capturefalls/roadmap/index.html>



Establish Readiness for Change

Explore the resolve of members of an organization to implement change to improve fall risk reduction practices, and their collective belief in their capacity ...

[Learn More »](#)



Interprofessional Fall Risk Reduction Team

Create an inter-professional fall risk reduction team responsible for managing and implementing the facility's fall risk reduction program.

[Learn More »](#)



Gap Analysis

Conduct an assessment of the current state of fall risk reduction practices in your facility compared to evidence-based best practices.

[Learn More](#)



Action Plan

Document and monitor the steps your team needs to take to reach your program goals.

[Learn More](#)



Fall Risk Reduction Policies and Procedures

Set expectations and influence decisions, actions, and activities necessary for your fall risk reduction program.

[Learn More](#)



Fall Definition

Specify what "counts" as a fall, and differentiate various types of falls (e.g. assisted vs. unassisted) as well as injuries.

[Learn More](#)

CAPTURE Falls Roadmap

<https://www.unmc.edu/patient-safety/capturefalls/roadmap/index.html>



Fall Risk Assessment

Identify patients who are at risk for falls and recognize their respective risk factors.

[Learn More](#)



Fall Risk Reduction Interventions

Implement interventions to reduce the influence of patient risk factors for falls and fall-related injury.

[Learn More](#)



Auditing Fall Risk Reduction Practices

Identify if fall risk reduction practices are being implemented as intended in your facility.

[Learn More](#)



Post-Fall Clinical Assessment

Establish a protocol to guide staff in the assessment of patients for potential injury after a fall occurs.

[Learn More](#)



Post-Fall Huddle

Create a safe environment to understand the 'story' behind a fall in order to learn and take action to prevent a future fall.

[Learn More](#)



Fall Event and Rate Reporting

Report and monitor falls and fall rates to track progress within your organization and allow for external benchmarking.

[Learn More](#)



Learning from Data

Use data to understand how well your fall risk reduction program is working to reduce fall risk in your facility.

[Learn More](#)



Sustainment Strategies

Maintain an effective fall risk reduction program over time.

[Learn More](#)

Know Falls Database and Quarterly Fall Summary Reports



Know Falls Database and Learning System:

- Secure, HIPAA compliant online fall event reporting and learning system

CAPTURE Falls Event Learning Form:

- <https://www.unmc.edu/patient-safety/documents/capture-falls-event-form.pdf>

Quarterly Fall Summary Report Elements

(historical over time)

Reported falls by admission visit type (acute, swing, observation, hospice; also outpatient, ER, ambulatory care clinic, visitor, and other)

Reported total, unassisted, and injurious falls

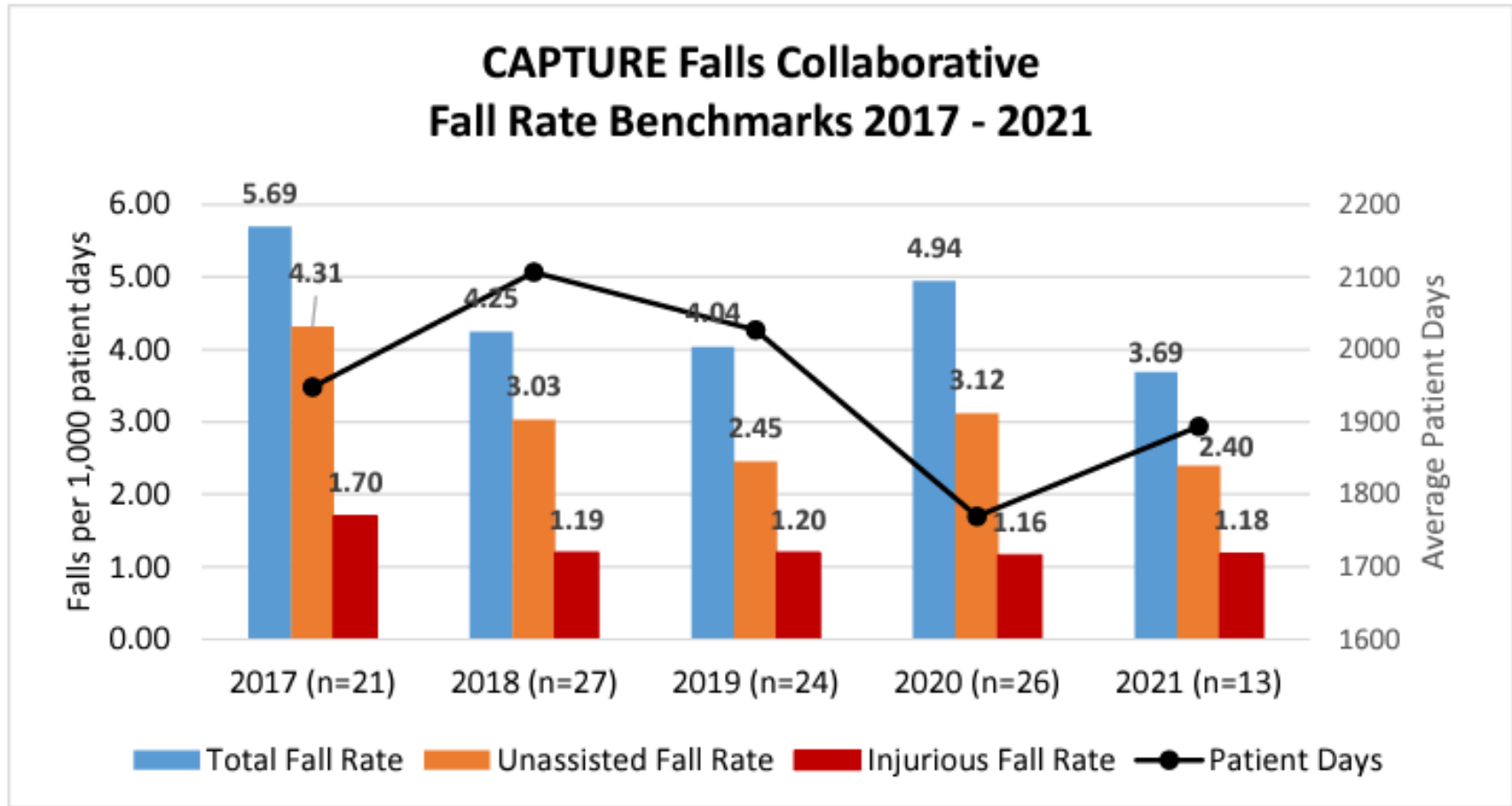
Reported falls by extent of harm and assistance

Reported falls by day of week

Reported falls by shift

Completed post-fall huddle forms

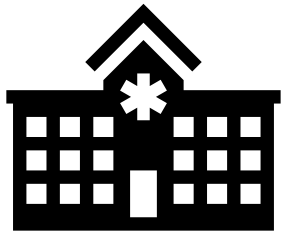
Annual Fall Rate Benchmark



CAPTURE Falls vs CATCH RURAL Falls

- Collaboration And Proactive Teamwork Used to Reduce (CAPTURE) Falls

- 10+ years of support to over 30 Nebraska Critical Access Hospitals for quality improvement of inpatient fall risk reduction
- “Capture” the patient’s risk during a hospital stay
- <https://www.unmc.edu/patient-safety/capturefalls/index.html>



Coordinated Action Toward Community Health: RedUce Risk And Limit (CATCH RURAL) Falls

- Logical extension of our work with hospitals to Rural Health Clinics
- “Catch” patients’ risk when they have an appointment



CATCH RURAL Falls Program

Coordinated Action Toward Community Health: RedUce Risk And Limit Falls

Quality improvement program for Rural Health Clinics to support the implementation of clinical fall risk screening, assessment, and intervention practices for older adult patients

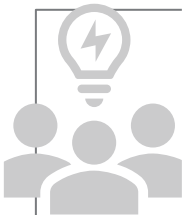
CATCH RURAL Falls Program



Complete a baseline survey to evaluate the current state of fall risk screening, assessment, and intervention activities in your clinic



Review pre-recorded educational modules on clinical and organizational aspects of implementing a fall risk management program

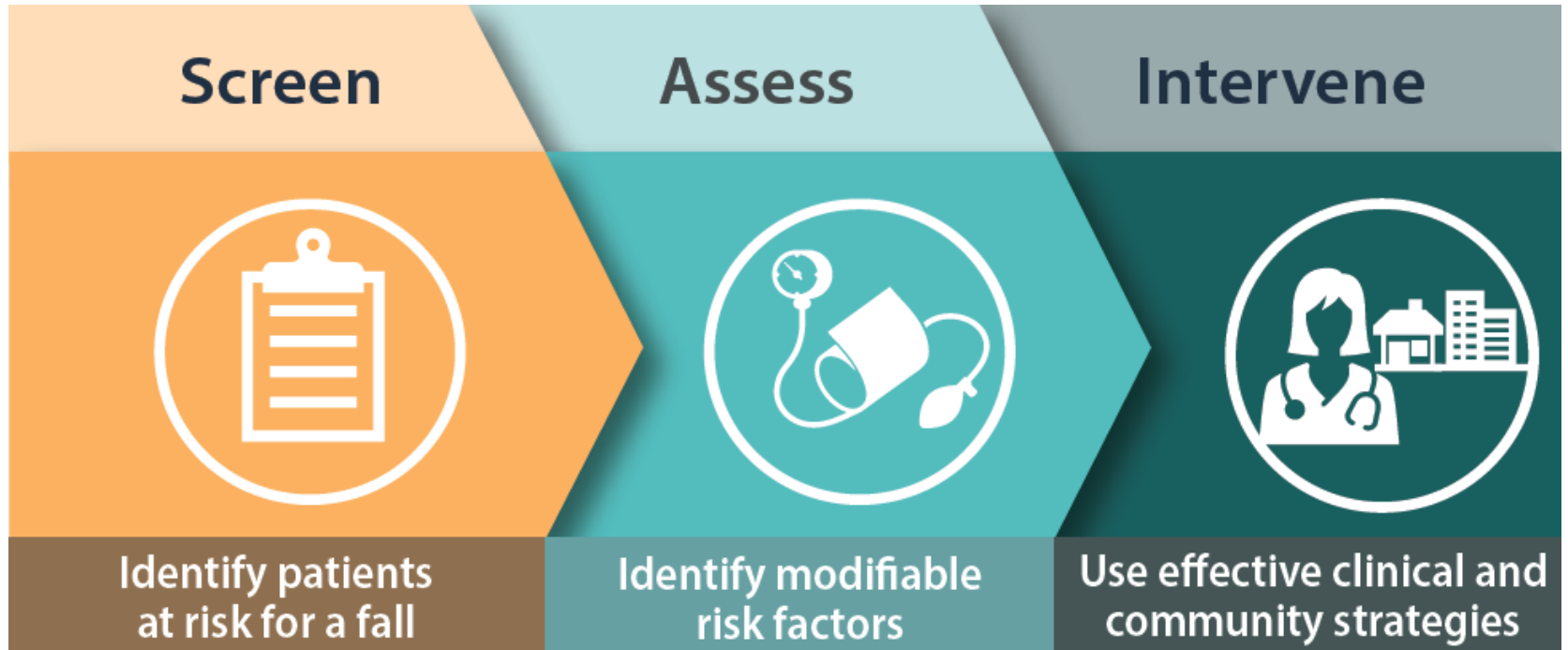


Participate in regular virtual meetings to receive personalized guidance to support fall risk screening, assessment, and intervention implementation activities in your clinic



Complete a post-program survey to evaluate implementation progress and the collaborative program

Centers for Disease Control (CDC) STEADI Toolkit



STEADI Stopping Elderly Accidents, Deaths & Injuries

Education Draws from the Centers for Disease Control (CDC) STEADI Toolkit



Created for healthcare providers to support implementation of a coordinated approach to manage falls

Algorithm for
Decision-
Making

Patient
Education
Materials

Provider
Education
Materials

Screening and
Assessment
Tools

Implementation
Strategies

How to Engage with the CATCH RURAL Falls Program

- Contact Dawn Venema or Vicki Kennel
- Cohort will launch during National Falls Prevention Awareness Week (September 18-22, 2023)

Contacts

Dawn Venema, PT, PhD:

dvenema@unmc.edu

Victoria (Vicki) Kennel, PhD:

victoria.kennel@unmc.edu